

A HISTORY OF THE LIVERPOOL INSTITUTE SCHOOLS

1825 to 1935

BY

HERBERT J. TIFFEN, M.A

26 Illustrations

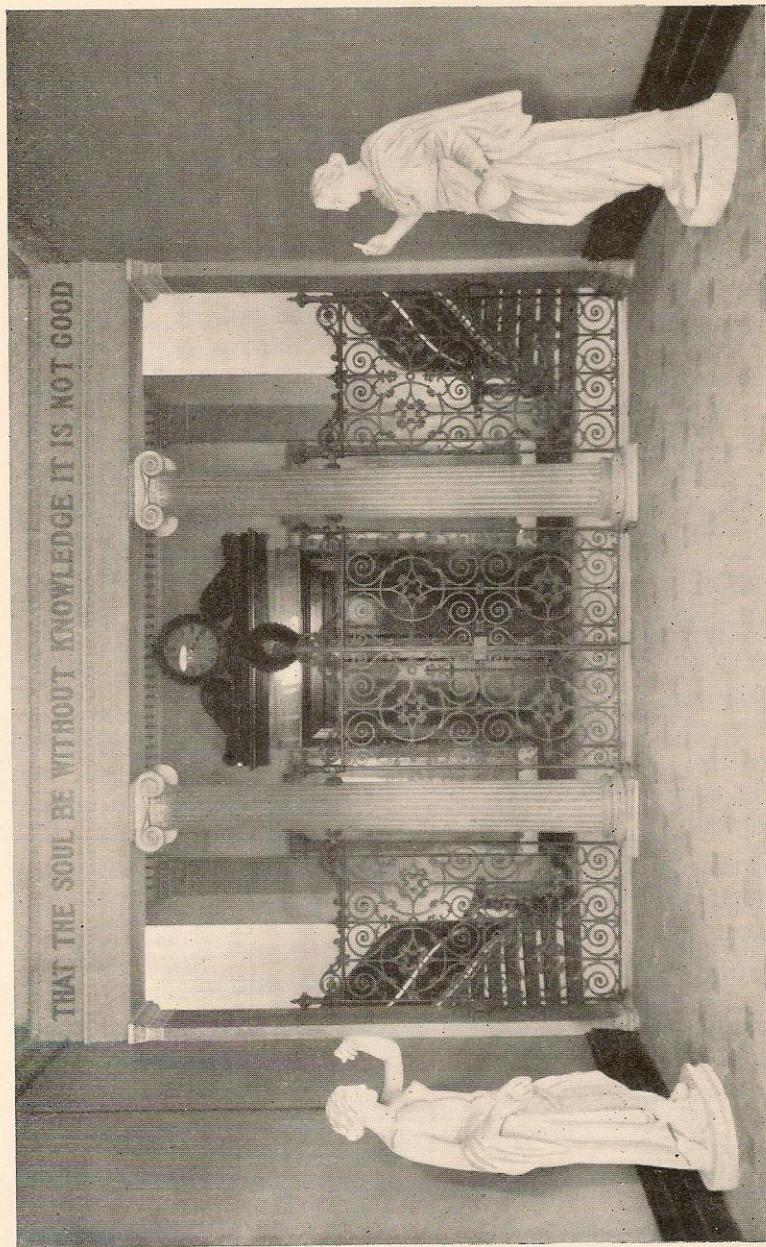


Plate I

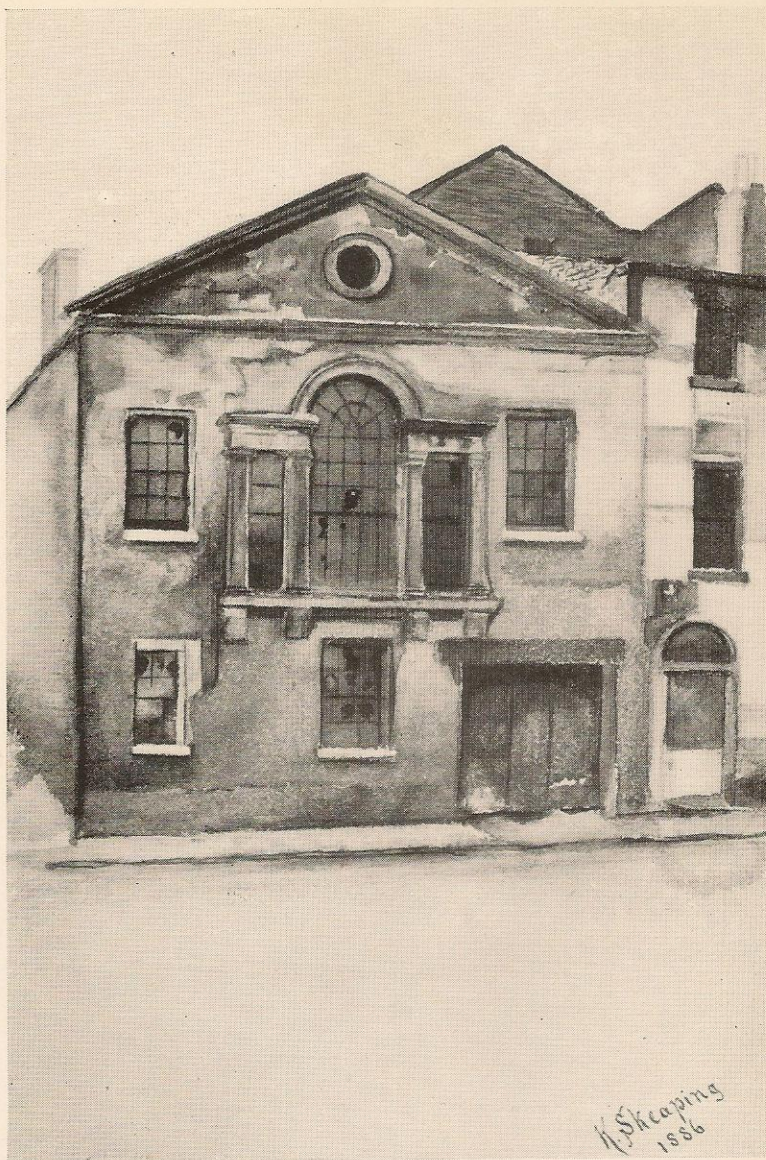
ENTRANCE HALL—BOYS' SCHOOL



Dr. T. STEWART TRAILL
Director, 1825—1832
President, 1827

Plate 2

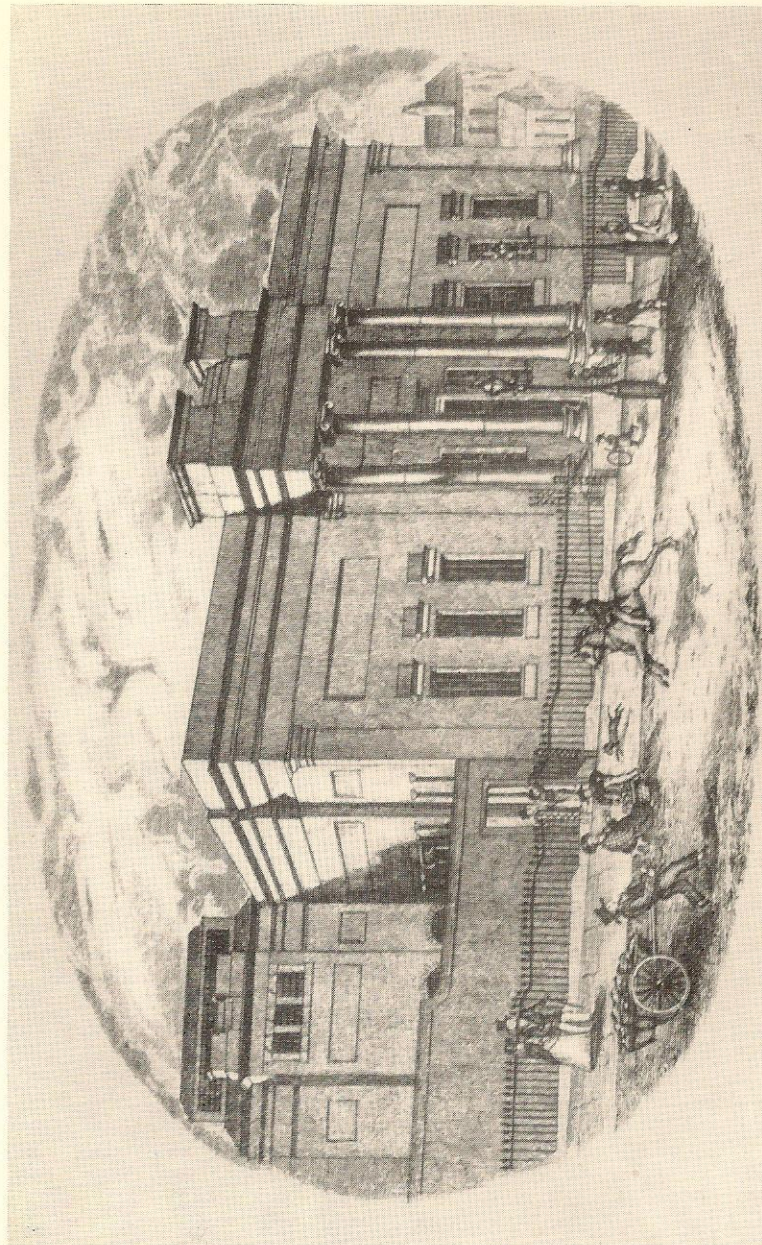
To face page 21.



THE OLD CHAPEL,
where the first lectures were given

Plate 3

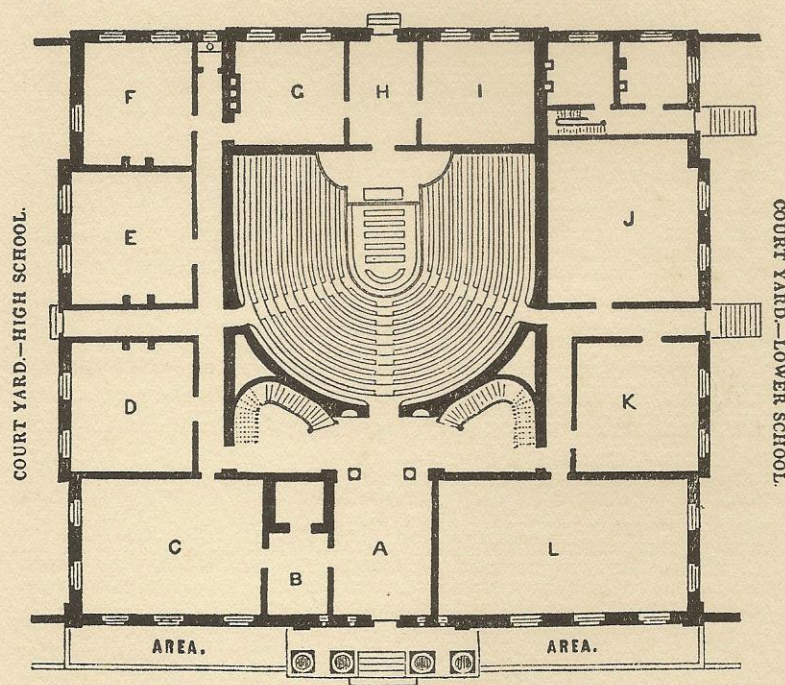
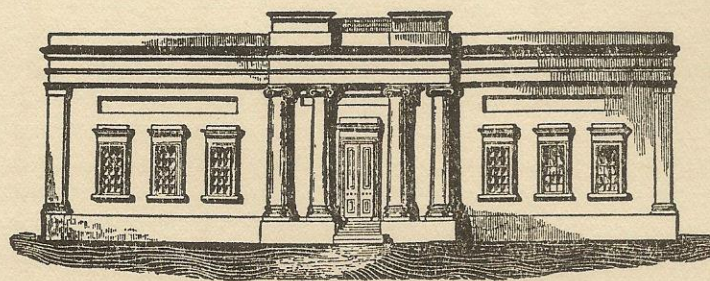
To face page 23.

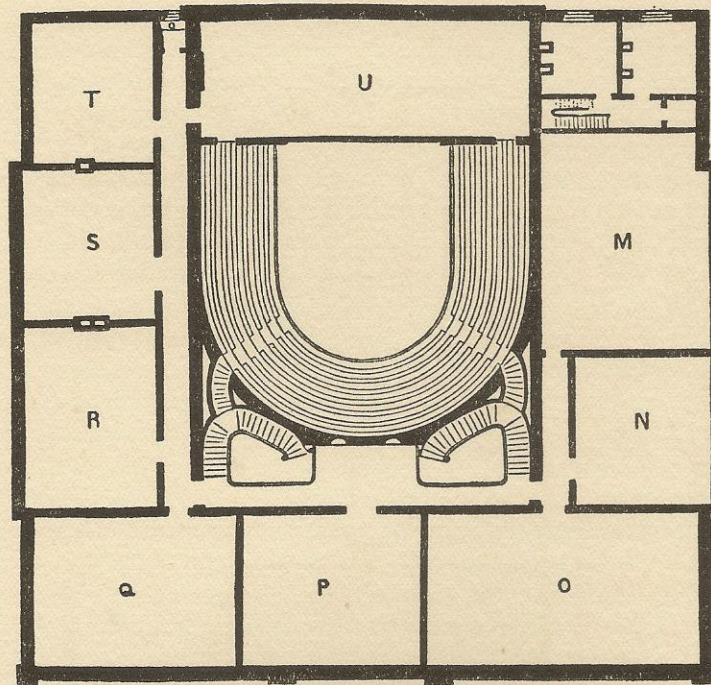


FRONT OF THE BOYS' SCHOOL
from a print of about 1844

Plate 4

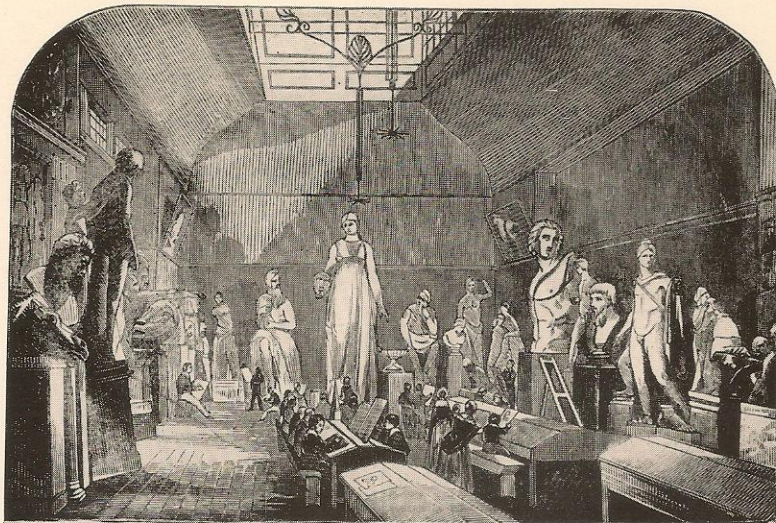
To face page 36.





REFERENCE TO PLAN.

- | | |
|--|---|
| A. Vestibule. | H. Back Vestibule. |
| B. Secretary's Office. | I. Chemical Department in High and Lower Schools. |
| C. Library. | Lecture Room. |
| D. Board Room. | U. Museum. |
| G. Laboratory. | |
| HIGH SCHOOL. | |
| E. Mathematical Department. | O. English Department. |
| F. Philosophical Department of High and Lower Schools. | P. Writing Department. |
| M. Writing Department of Preparatory School. | Q. Classical Department. |
| N. Mathematical Department, No. 2. | R. French Department, No. 1. |
| | S. French Department, No. 2. |
| LOWER SCHOOL. | |
| L. English Department. | K. Mathematical and Philosophical Department. |
| J. Writing and Drawing Department. | |
| EVENING SCHOOL. | |
| L. Mathematical Department. | N. Mechanical Drawing and Naval Architecture Department. |
| P. Writing Department. | T. Figure Drawing, Ornamental Painting, Modelling, and Ornamental Drawing Department. |
| J. Landscape, Drawing, and Perspective Department. | |
| M. Architectural Drawing Department. | |



THE SCULPTURE GALLERY

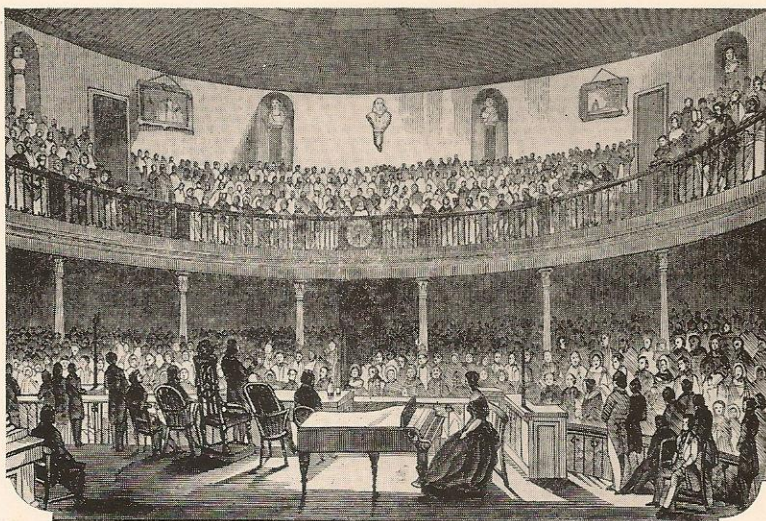
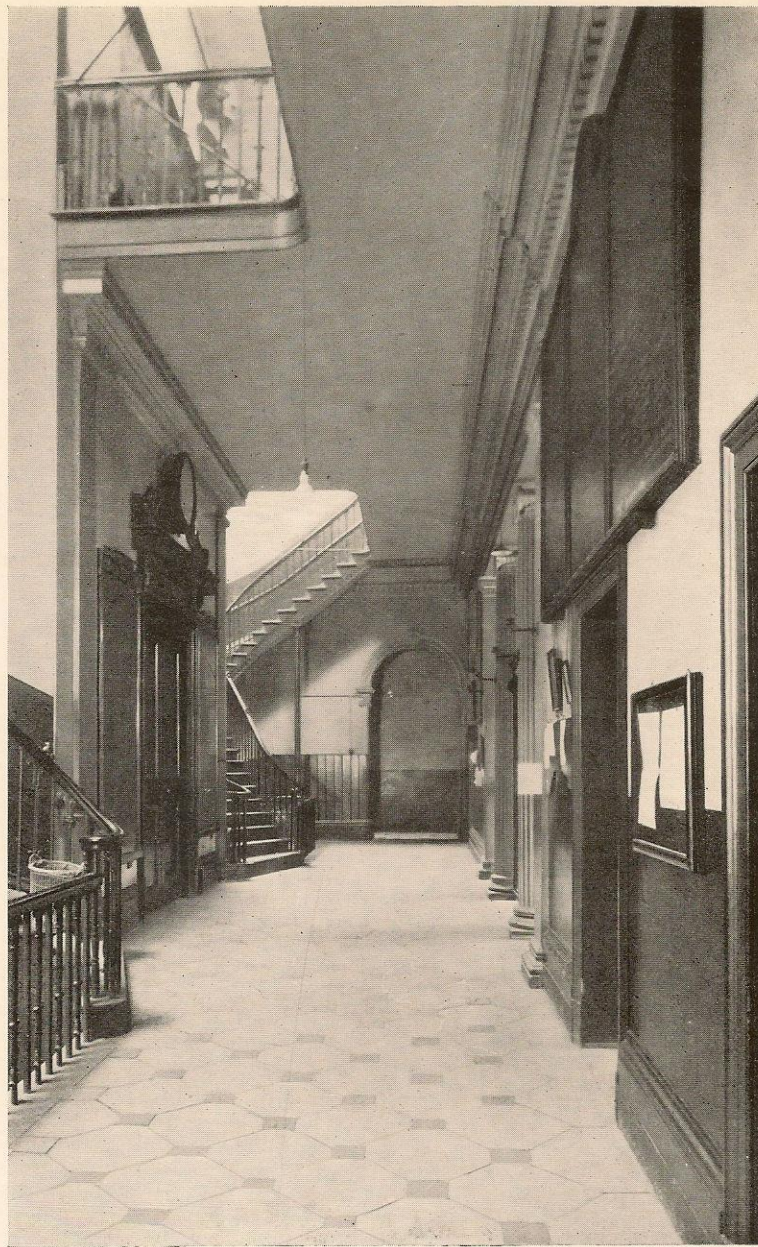


Plate 7

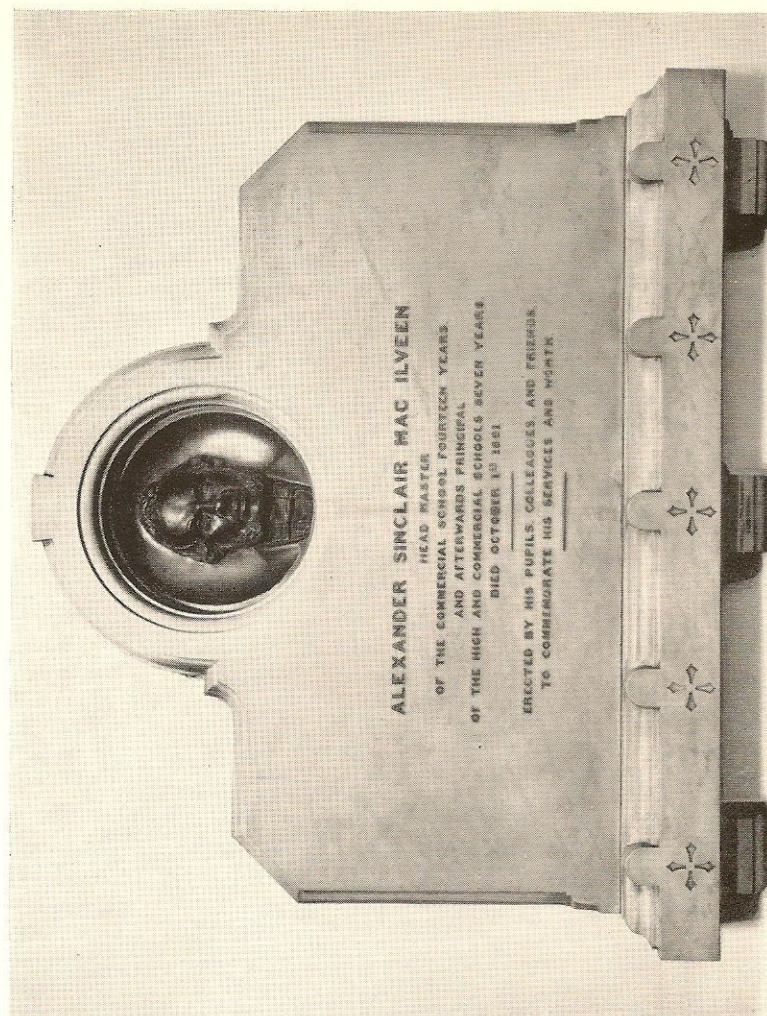
THE LECTURE HALL
From the *Illustrated London News*, Mar. 2nd, 1844



MAIN CORRIDOR
Boys' School

Plate 8

To face page 54.



THE A. S. MAC ILVEEN MEMORIAL

Plate 9



DR. JOSHUA JONES
Headmaster, 1862—1865

Plate 10

To face page 80.



REV. JOHN SEPHTON
Headmaster, 1866—1889

Plate 11

To face page 86.



MR. ALFRED HUGHES
Headmaster, 1890—1896

Plate 12

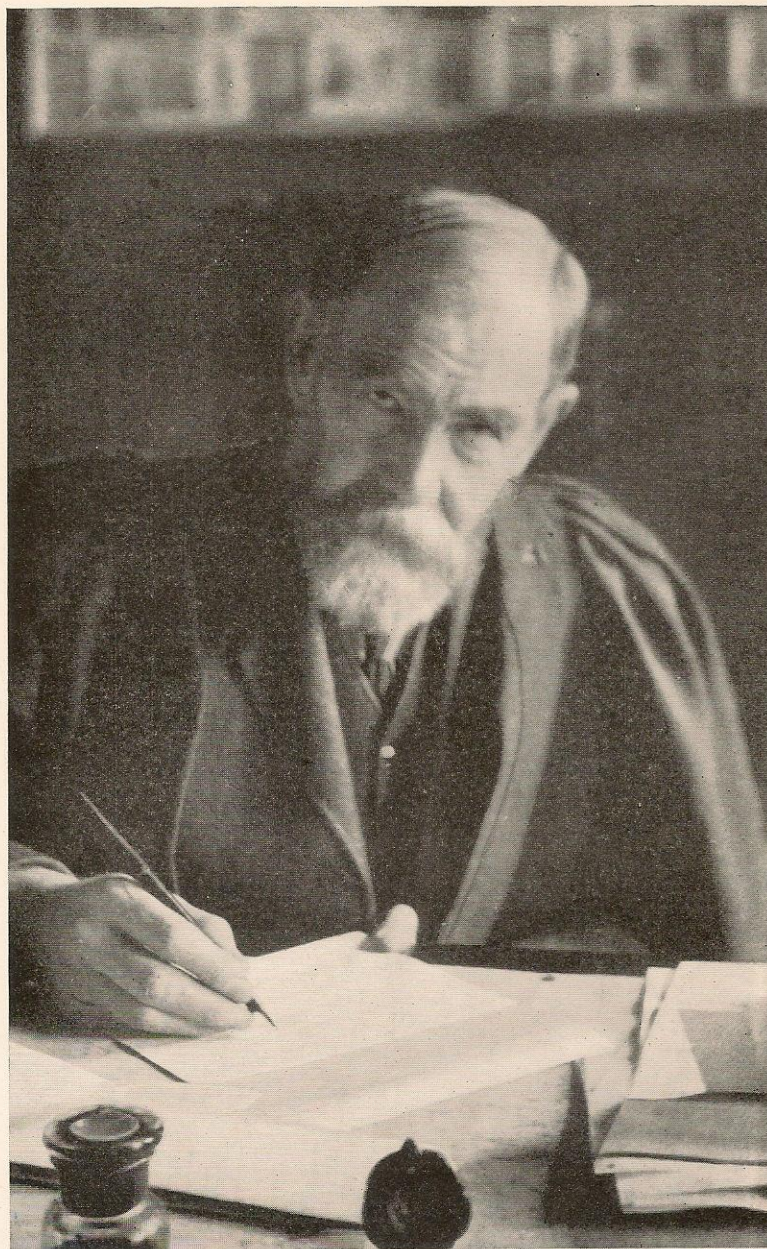
To face page 88.



MR. W. C. FLETCHER
Headmaster, 1896—1904

Plate 13

To face page 90.



MR. H. V. WHITEHOUSE
Headmaster, 1904—1923

Plate 14

To face page 92.



REV. H. H. SYMONDS
Headmaster, 1924—1935

Plate 15

To face page 98.



MR. J. R. EDWARDS
Headmaster, 1935

Plate 16

To face page 100.

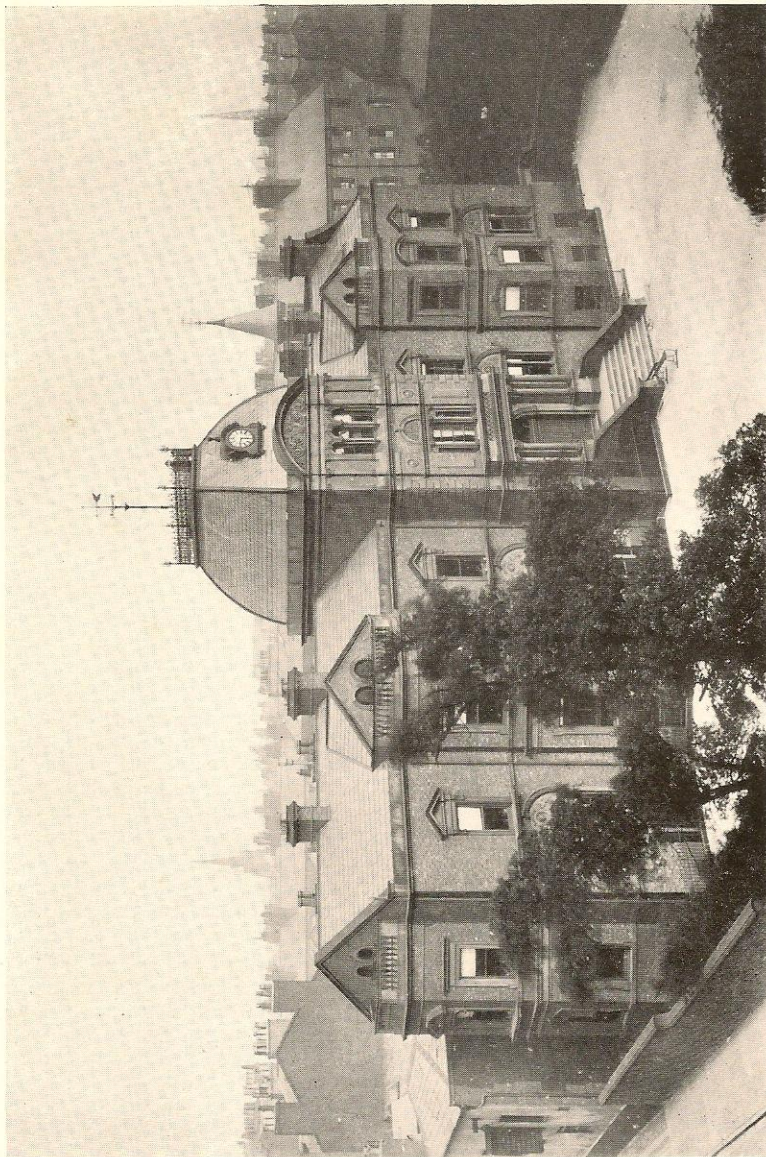
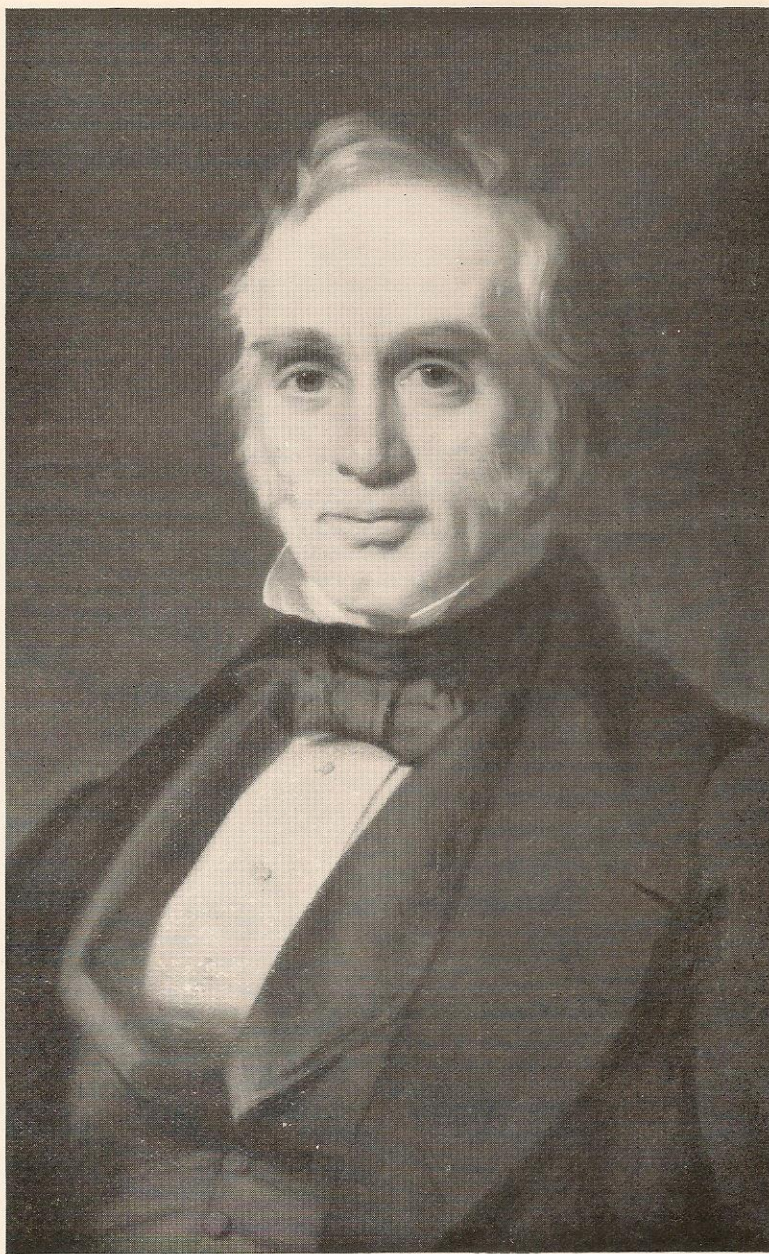


Plate 17

BLACKBURNE HOUSE

To face page 103.



MR. GEORGE HOLT
Director, 1838—1861
President, 1842 and 1849

Plate 18

To face page 104.



ENTRANCE HALL
BLACKBURN HOUSE

Plate 19

To face page 106.



LADY HERDMAN
Governor, 1906—1922
Chairman of Girls' School Committee, 1911—1922

Plate 20

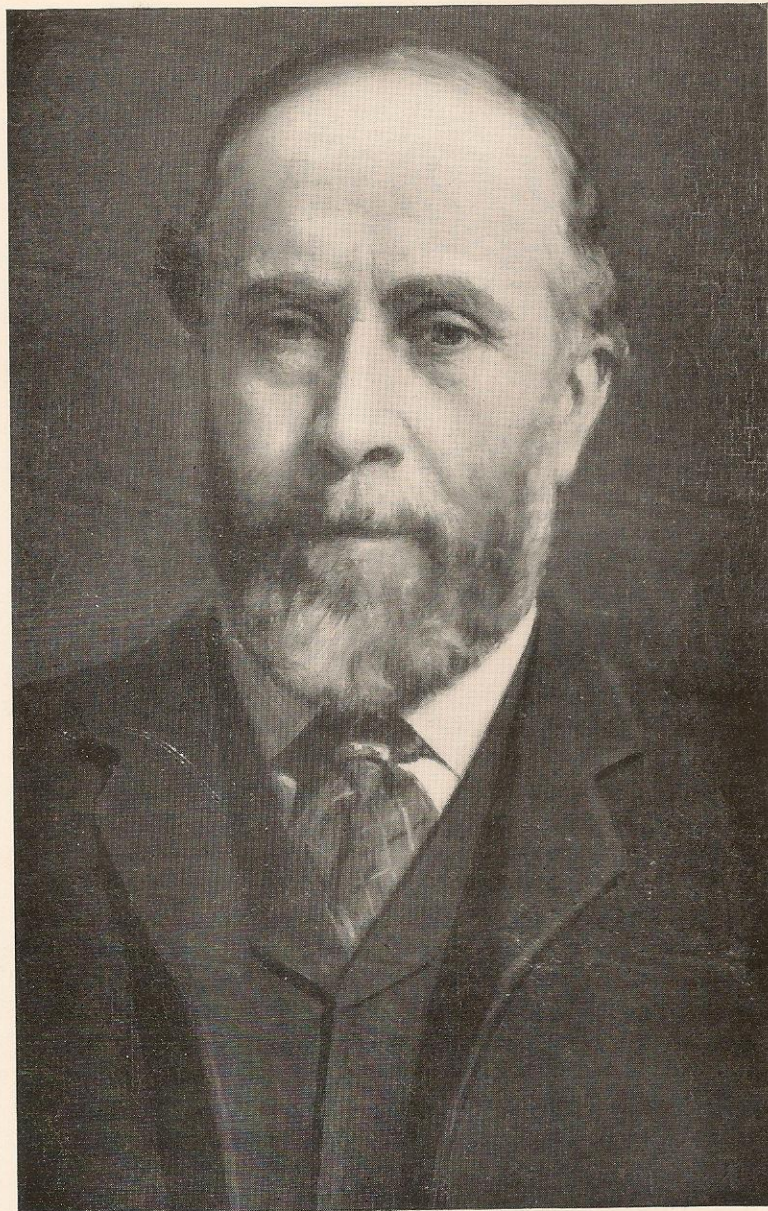
To face page 109.



MISS ASHWELL
Headmistress of the Girls' School, 1917

Plate 21

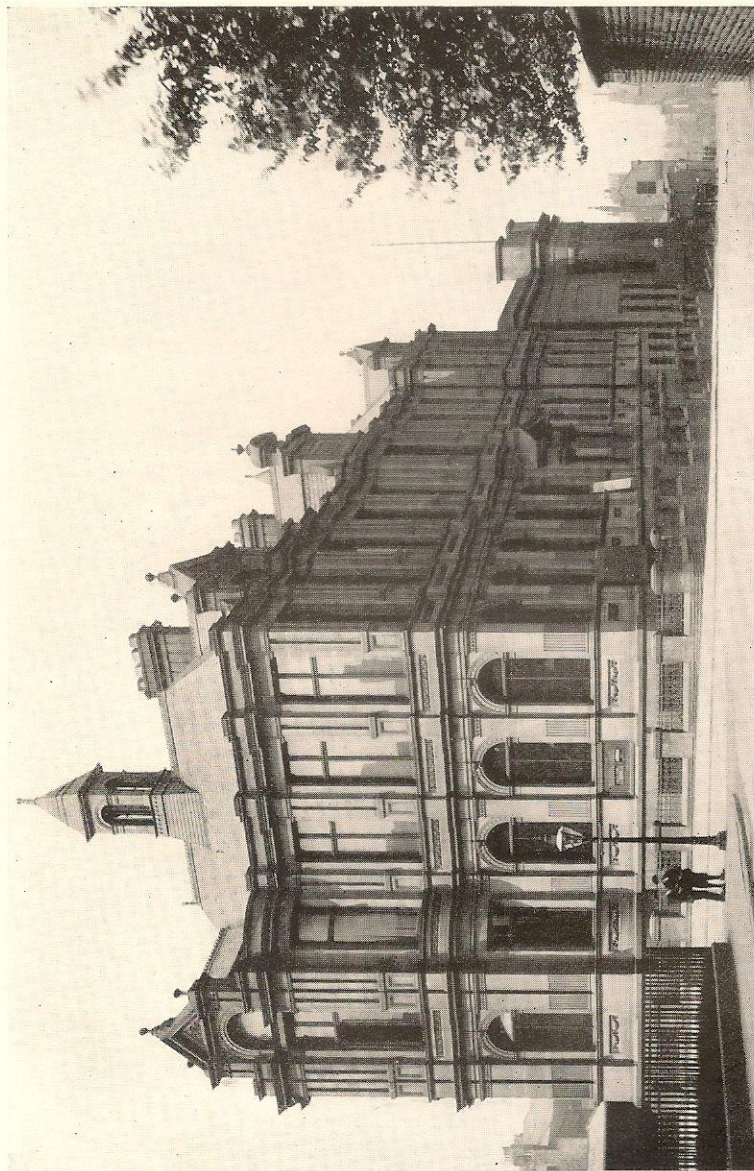
To face page 110.



MR. ALFRED HOLT
Director, 1860—1904
President, 1864—1880—1881

Plate 22

To face page 112.



THE SCHOOL OF ART, 1883—1905

Plate 23

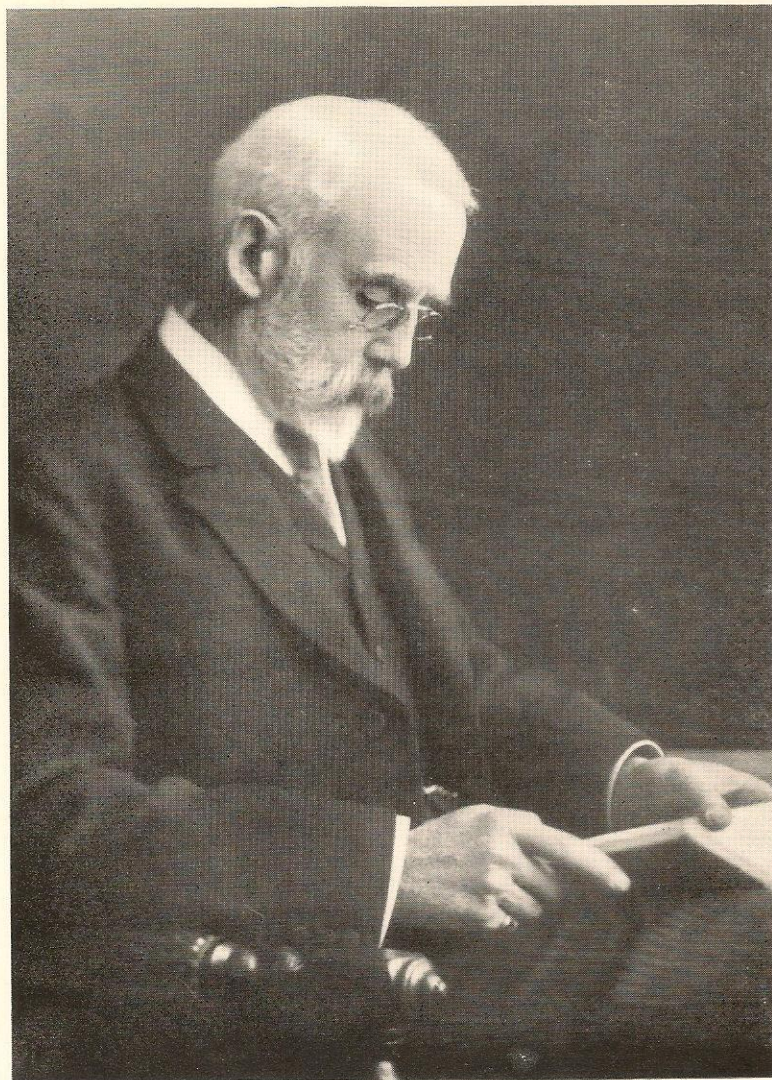
To face page 115.



MR. PHILIP HOLT
Director, 1864—1905
President, 1867

Plate 24.

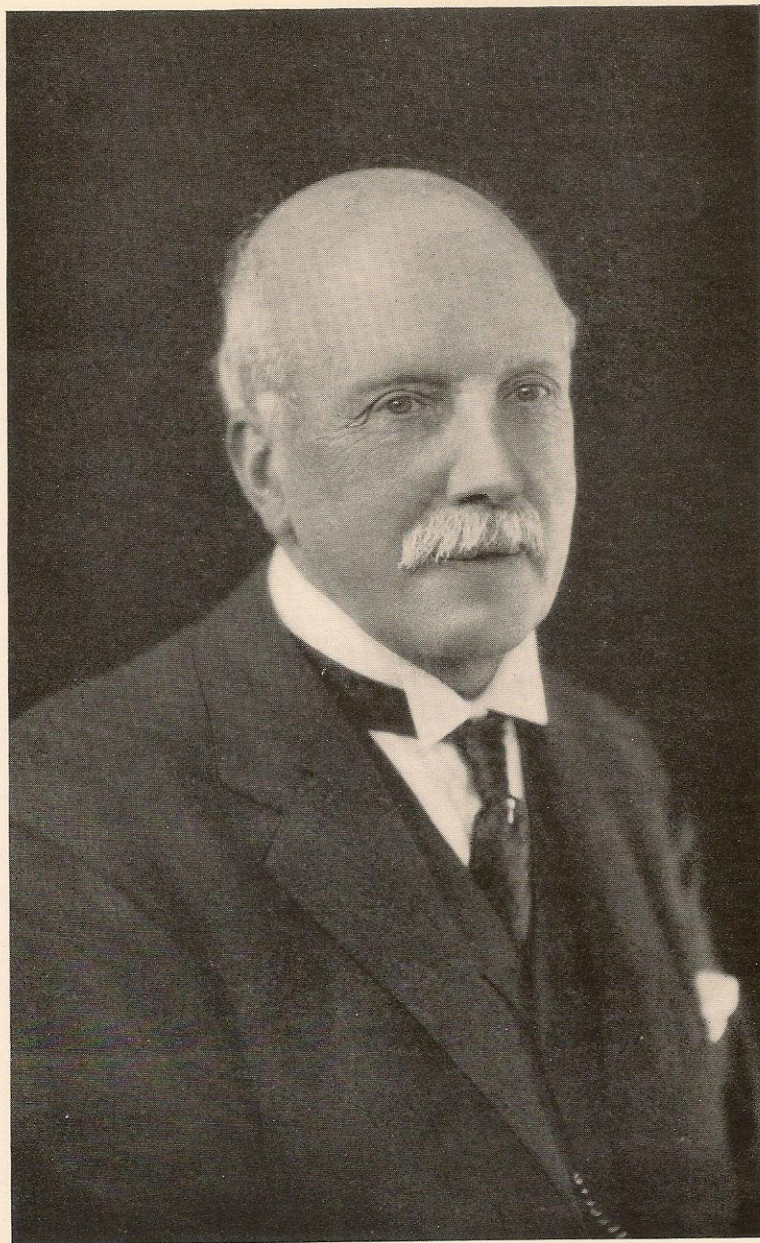
To face page 126.



SIR FRANCIS C. DANSON
Director, 1884—1905. Governor, 1905—1925
President, 1890, 1899—1905. Chairman, 1905—1925

Plate 25

To face page 128.



ALD. BURTON W. EILLS
Governor, 1899—1935
Chairman of Governors, 1925—1935

Plate 26

To face page 134.